

FSCAN-3280V

X-ray Automatic Vision Inspection System

The best in class inspection capability
Superb X-ray safety
Outstanding reliability & operability



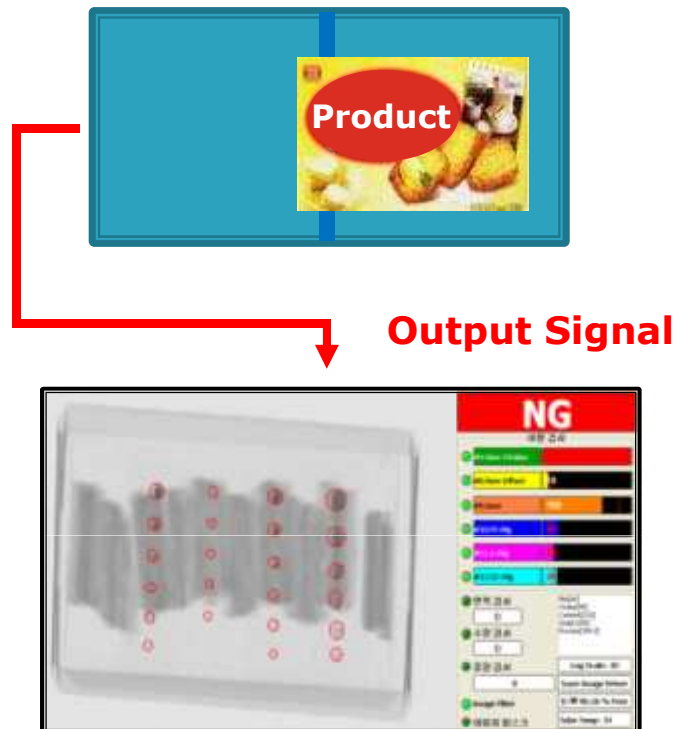
XAVIS

X-ray Automatic Vision Inspection System

FSCAN-3280V

X-ray Automatic Vision Inspection System

X-ray Inspection System



- X-rays are connected to the production-line by the conveyor belt.
- X-rays are detected other foreign particles by using X-ray scanning way by X-ray beaming to the detector and presence of a contaminant is determined by image analysis.

FSCAN-3280V

X-ray Automatic Vision Inspection System

Specifications

Min. detecting ability	Lead (Pb)	0.4 x 0.4 x 0.4 mm
X-ray tube	MAX. 60kV, 1.25mA, 100W	
Detector	Pitch	0.4 x 0.4 mm
	Maximum detecting width	220 mm
	Maximum detecting height	60 mm
Conveyor	Speed	10 ~ 50 M/M
	Width	270 mm
	Maximum product weight	8 kg
Tower lamp	3 colors	
Control computer	Industrial computer	
Monitor	15" Touch screen	
Operating system	Windows 7	
Wrong image management	Possible to store at USB port	
Model register function	Possible to register max. 10,000 models of product	
Masking function	Image of product, function of image brightness(16 kinds)	
Product management	Daily/Month/Model product capacity analysis	
Equipment management	MTBF, MTTR, Error log, Error analysis	
Teaching	Auto teaching , Manual teaching	
Image management	Image Save/Print/Analysis [Defect size measurement]	
Washing	Easy to clean	
X-ray leakage	Maximum 1 μ Sv/h or less	
Power requirements	AC220V, 50/60Hz, 0.7kVA	
Weight	170 kg	
Temperature	0°C ~ 35°C	

- ※ Sensitivity would be changed depend on inside materials, size and array.
- ※ The height of belt level: 750±50mm (Customization possible)
- ※ The maximum belt speed can be changed. (option)
- ※ The air conditional is optional.

FSCAN-3280V

X-ray Automatic Vision Inspection System

External Dimensions

